

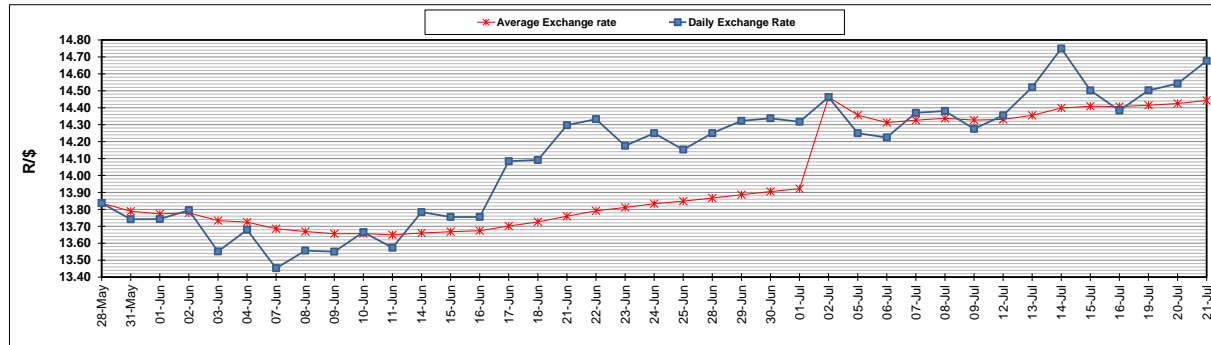
	PETROL 95 ULP	PETROL 93 ULP & LRP	DIESEL 0.05%	DIESEL 0.005%	ILL. PAR.
GAUTENG PUMP PRICE (SA c/l) AS FROM 07/07/2021	1,739.000	1,720.000	-	-	-
WHOLESALE PRICE (SA c/l) AS FROM 07/07/2021	-	-	1,508.620	1,512.020	913.488
SINGLE NATIONAL MAXIMUM RETAIL PRICE	-	-	-	-	1,150.000
BASIC FUEL PRICE - 21/07/2021 (SA c/l)	796.424	783.035	743.638	746.552	725.413
PRESS RELEASE CONTRIBUTION TO BFP 07/07/2021 - 21/07/2021 (SA c/l)	743.170	734.170	721.630	725.030	700.128
UNIT OVER/(UNDER) RECOVERY - 21/07/2021 (SA c/l)	(53.254)	(48.865)	(22.008)	(21.522)	(25.285)
AVERAGE BASIC FUEL PRICE 02/07/2021 - 21/07/2021	814.329	801.017	758.159	760.912	737.430
AVERAGE UNIT OVER/(UNDER) RECOVERY 02/07/2021 - 21/07/2021	(76.730)	(73.061)	(45.529)	(44.667)	(45.016)

### ANALYSIS MOVEMENT OF AVERAGE OVER/(UNDER) RECOVERY

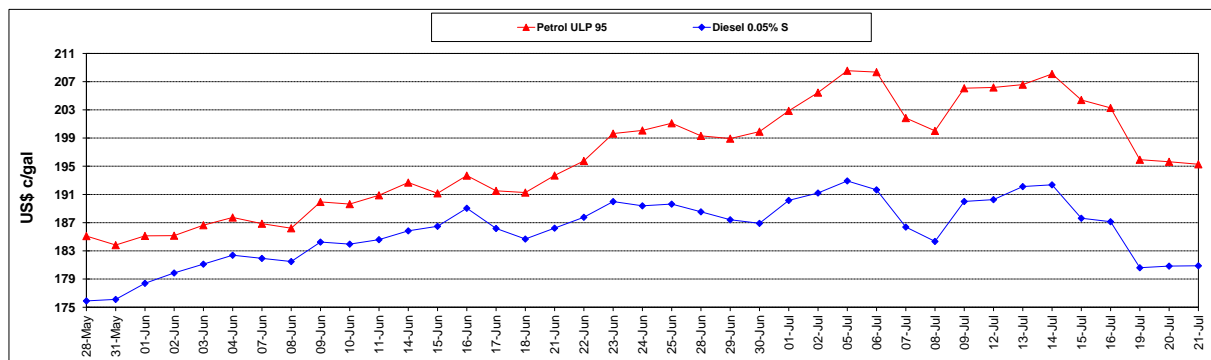
	PETROL 95	PETROL 93	DIESEL 0.05%	DIESEL 0.005%	ILL. PAR.
- MOVEMENT IN INTERNATIONAL PRODUCT PRICES	(47.371)	(44.182)	(18.195)	(17.235)	(18.429)
- MOVEMENT IN EXCHANGE RATE	(29.359)	(28.879)	(27.334)	(27.433)	(26.587)
AVERAGE UNIT OVER/(UNDER) RECOVERY 02/07/2021 - 21/07/2021	(76.730)	(73.061)	(45.529)	(44.667)	(45.016)

R/\$ EXCHANGE RATE - (R/\$14.6765- 21/07/2021)

### EXCHANGE RATE USED IN BASIC FUEL PRICE



### INTERNATIONAL PRODUCT PRICES OF BASKET USED IN BASIC FUEL PRICE



### BASIC FUEL PRICE IN SA CENTS PER LITRE

